

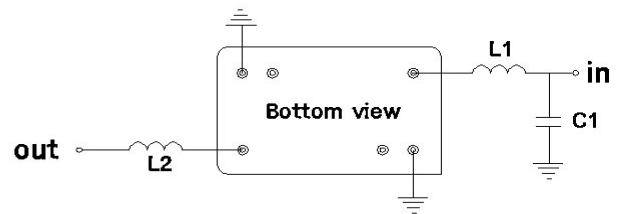
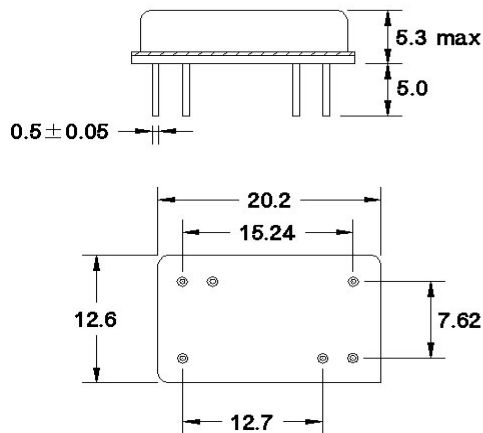
# 70 MHz SAW Filter

# 162914

## Specifications

Parameter	Unit	Min.	Typical	Max.
Centre Frequency	MHz	69.94	70.00	70.06
Insertion Loss	dB	-	24.5	26.00
1dB Bandwidth	MHz	19.0	19.10	-
3dB Bandwidth	MHz	19.5	19.57	-
40dB Bandwidth	MHz	-	21.43	21.70
Passband Ripple	dB	-	0.85	1.00
Group Delay Variation	nsec	-	35.00	80.00
Absolute Delay	µsec	-	1.98	-
Ultimate Rejection	dB	50	55	-
Substrate Material	-	-	LN	-
Ambient Temperature	°C	-	25	-

## Package Outline



$L1 = 180 + 27 \text{ nH}$ ,  $L2 = 120 \text{ nH}$   
 $C1 = 43 \text{ pF}$   
 Source/Load Impedance =  $50 \Omega$

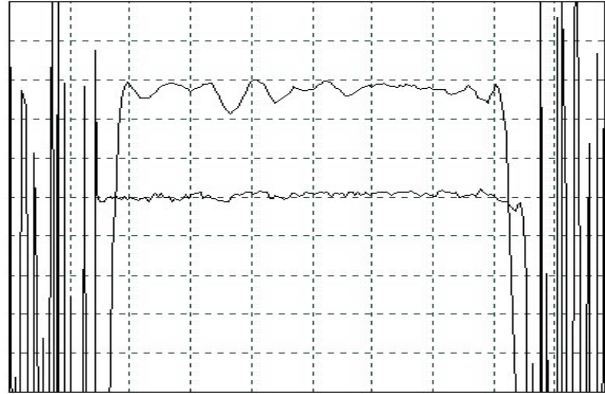
SAW PRODUCTS

COM DEV

# 70 MHz SAW Filter

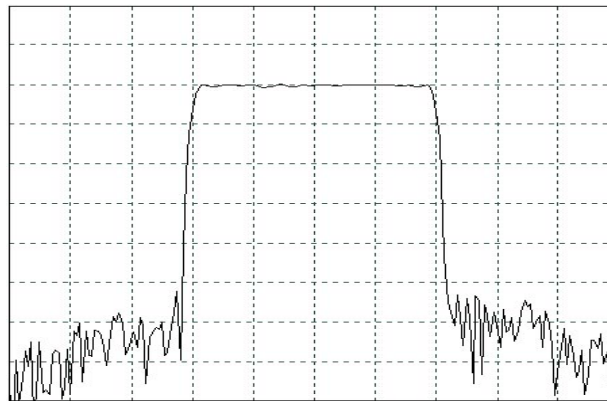
162914

## Typical Performance – Narrowband



Horizontal: 3.0 MHz/Div  
Vertical: 1 dB/Div  
Vertical: 100 ns/Div

## Typical Performance – Wideband



Horizontal: 5.0 MHz/Div  
Vertical: 10 dB/Div

SAW PRODUCTS

COM DEV