

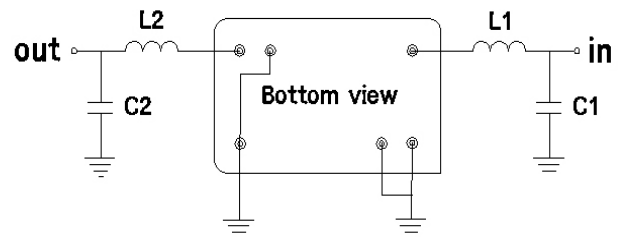
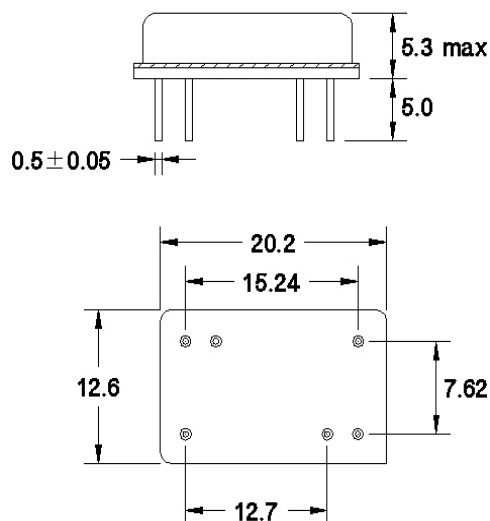
70 MHz SAW Filter

162915

Specifications

Parameter	Unit	Min.	Typical	Max.
Centre Frequency	MHz	69.94	70.00	70.06
Insertion Loss	dB	-	24.00	26.00
1dB Bandwidth	MHz	19.00	19.15	-
3dB Bandwidth	MHz	19.50	19.60	-
40dB Bandwidth	MHz	-	21.45	21.70
Passband Ripple	dB	-	0.80	1.00
Group Delay Variation	nsec	-	30.00	80.00
Absolute Delay	µsec	-	1.98	-
Ultimate Rejection	dB	50.00	55.00	-
Substrate Material	-	-	LN	-
Ambient Temperature	°C	-	25.00	-

Package Outline

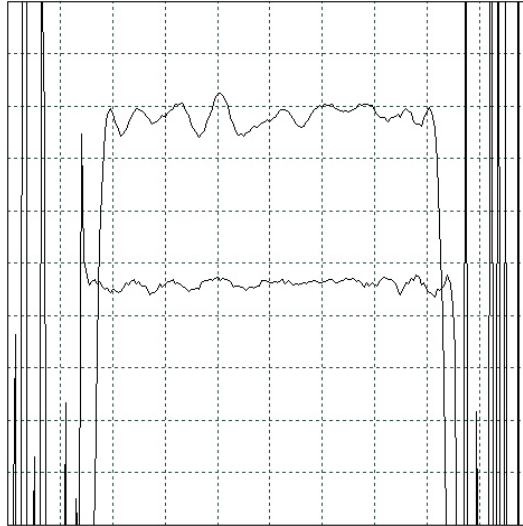


L1 = 150 nH, L2 = 220 nH
C1 = 0 pF C2 = 43 pF
Source/Load Impedance = 50 Ω

70 MHz SAW Filter

162915

Typical Performance – Narrowband

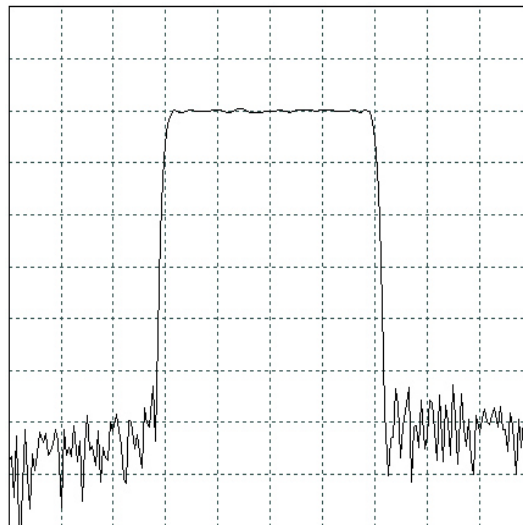


Horizontal: 3.0 MHz/Div

Vertical: 1 dB/Div

Vertical: 100 ns/Div

Typical Performance – Wideband



Horizontal: 5.0 MHz/Div

Vertical: 10 dB/Div

SAW PRODUCTS

COM DEV