

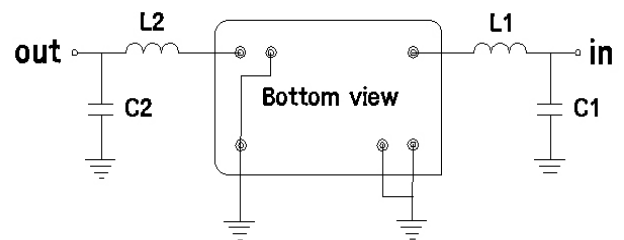
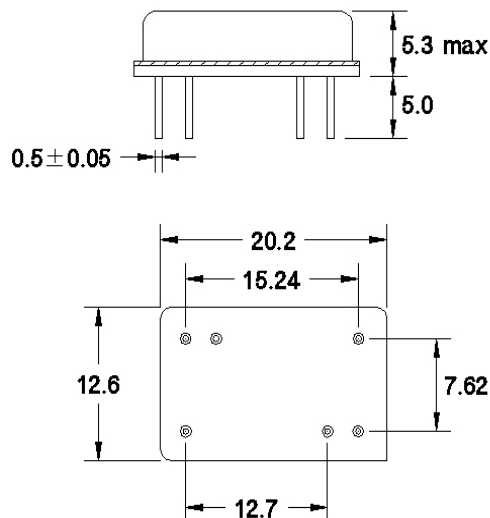
## 70 MHz/20.3 MHz B/W SAW Filter

162916

## Specifications

Parameter	Unit	Min	Typical	Max
Center Frequency	MHz	69.94	70.00	70.06
Insertion Loss	dB		22.8	24.0
1dB Bandwidth	MHz	20.00	20.10	
3dB Bandwidth	MHz	20.30	20.40	
40dB Bandwidth	MHz		21.70	21.90
Passband Ripple	dB		0.7	1.0
Group Delay Variation	nsec		50	100
Absolute Delay	µsec		2.34	
Ultimate Rejection	dB	50	55	
Substrate Material			LN	
Ambient Temperature	°C		25	

## Package Outline

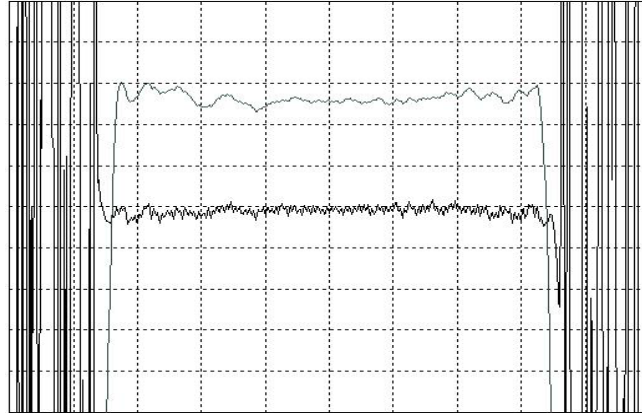


L1 = 177 nH , L2 = 202 nH  
 C1 = 8 pF, C2 = 39 pF  
 Source/Load Impedance = 50 Ω

# 70 MHz/20.3 MHz B/W SAW Filter

# 162916

## Typical Performance – Narrowband

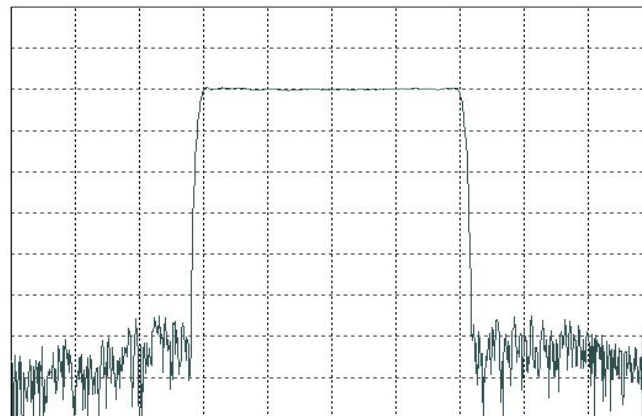


Horizontal : 3.0 MHz/Div

Vertical : 1 dB/Div

Vertical : 100 ns/Div

## Typical Performance – Wideband



Horizontal : 5.0 MHz/Div

Vertical : 10 dB/Div

SAW PRODUCTS