

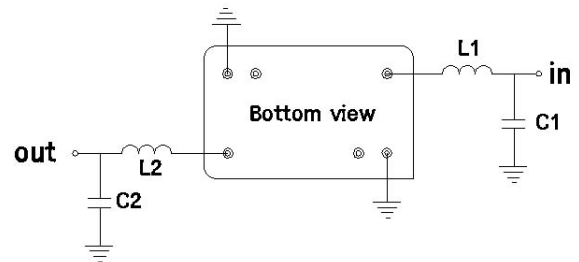
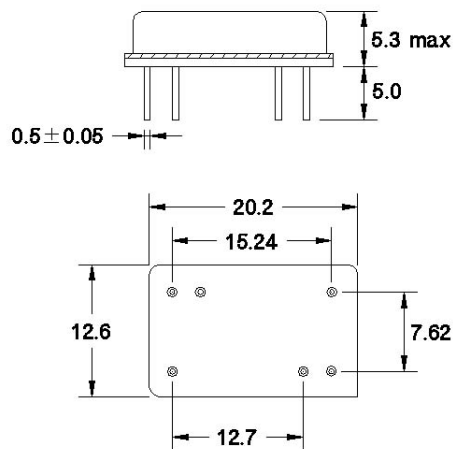
# 140 MHz/7.3 MHz B/W SAW Filter

# 162942

## Specifications

Parameter	Unit	Min	Typical	Max
Center Frequency	MHz	139.9	140.0	140.1
Insertion Loss	dB		22.5	25.0
1dB Bandwidth	MHz	6.8	7.1	
3dB Bandwidth	MHz	7.3	7.6	
40dB Bandwidth	MHz		9.5	10.0
Passband Ripple	dB		0.4	0.8
Group Delay Variation	nsec		50	70
Phase Linearity	deg		3.8	7.0
Absolute Delay	µsec		2.84	
Ultimate Rejection	dB	50	55	
Substrate Material			112LT	
Ambient Temperature	°C		25	

## Package Outline

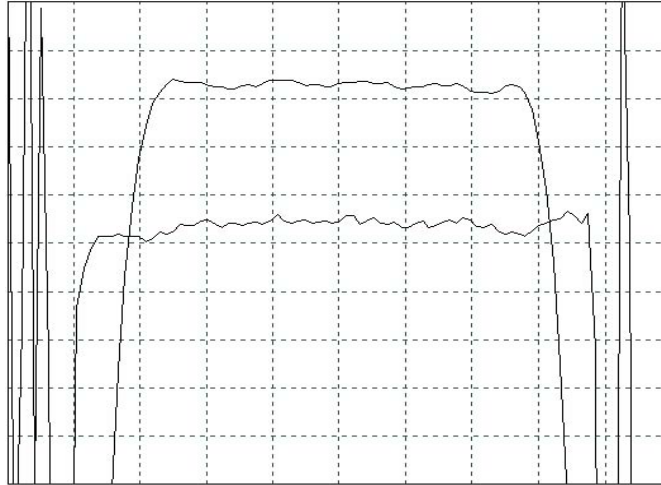


**L1 = 39 nH , C1 = 43 pF**  
**L2 = 39 nH , C2 = 43 pF**  
**Source/Load Impedance = 50 Ω**

# 140 MHz/7.3 MHz B/W SAW Filter

# 162942

## Typical Performance – Narrowband

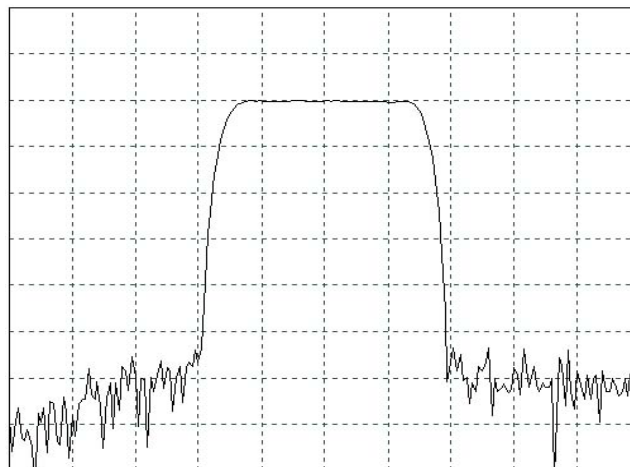


Horizontal : 1.2 MHz/Div

Vertical : 1 dB/Div

Vertical : 100 ns/Div

## Typical Performance – Wideband



Horizontal : 2.5 MHz/Div

Vertical : 10 dB/Div

SAW PRODUCTS