

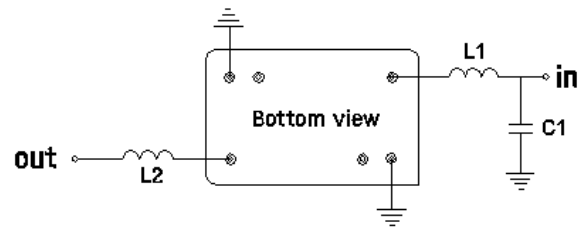
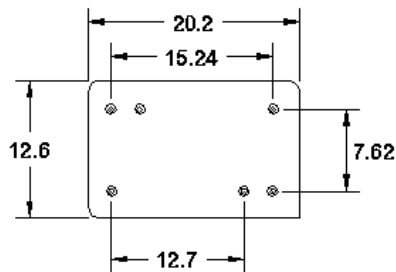
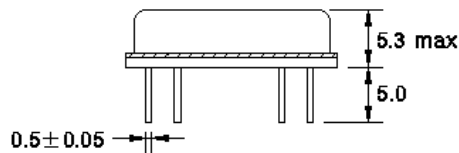
# 140 MHz/25 MHz B/W SAW Filter

# 162947

## Specifications

| Parameter             | Unit | Min   | Typical | Max   |
|-----------------------|------|-------|---------|-------|
| Center Frequency      | MHz  | 139.9 | 140.0   | 140.1 |
| Insertion Loss        | dB   |       | 21.5    | 24.0  |
| 1dB Bandwidth         | MHz  | 24.3  | 24.8    |       |
| 3dB Bandwidth         | MHz  | 25.0  | 25.5    |       |
| 40dB Bandwidth        | MHz  |       | 28.6    | 30.0  |
| Passband Ripple       | dB   |       | 0.7     | 1.0   |
| Group Delay Variation | nsec |       | 30      | 100   |
| Absolute Delay        | µsec |       | 1.20    |       |
| Ultimate Rejection    | dB   | 50    | 55      |       |
| Substrate Material    |      |       | LN      |       |
| Ambient Temperature   | °C   |       | 25      |       |

## Package Outline



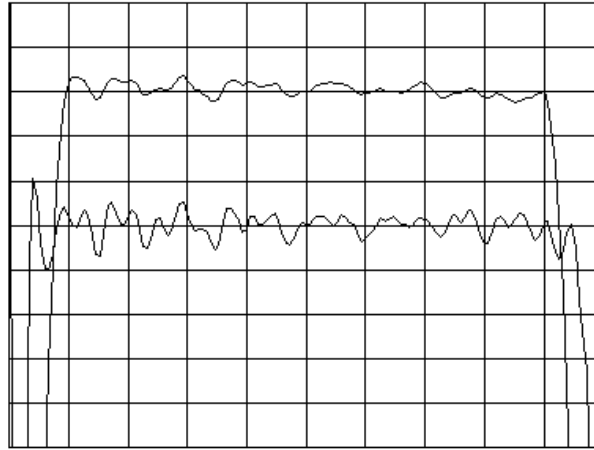
L1 = 56 nH, C1 = 18 pF  
 L2 = 56 nH  
 Source/Load Impedance = 50 Ω

SAW PRODUCTS

# 140 MHz/25 MHz B/W SAW Filter

162947

## Typical Performance – Narrowband

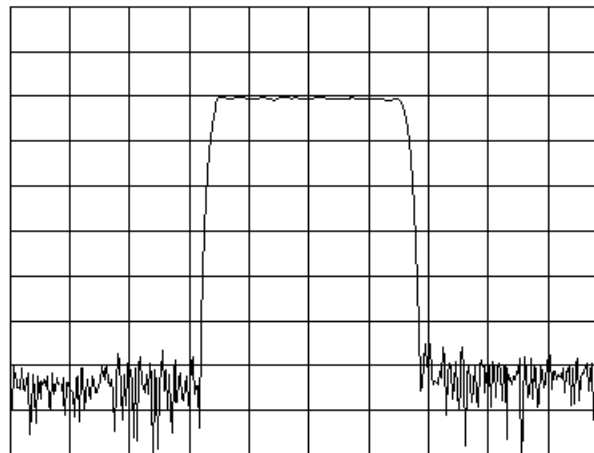


Horizontal : 3.0 MHz/Div

Vertical : 1 dB/Div

Vertical : 20 ns/Div

## Typical Performance – Wideband



Horizontal : 8.0 MHz/Div

Vertical : 10 dB/Div

SAW PRODUCTS