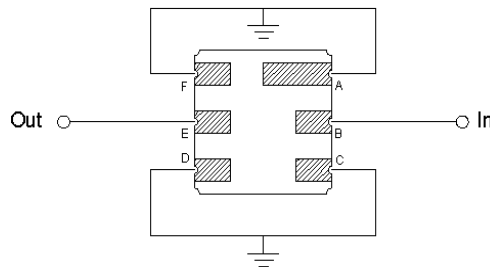
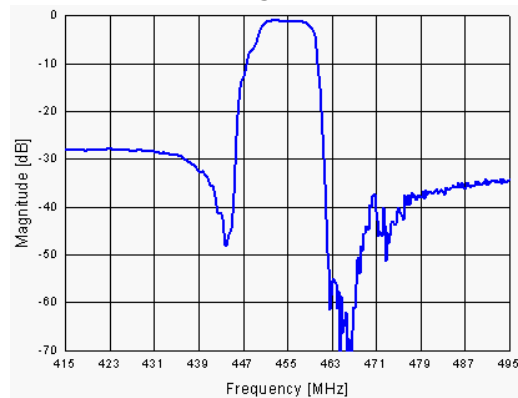


455.0 MHz RF SAW Filter for CDMA Tx 162958

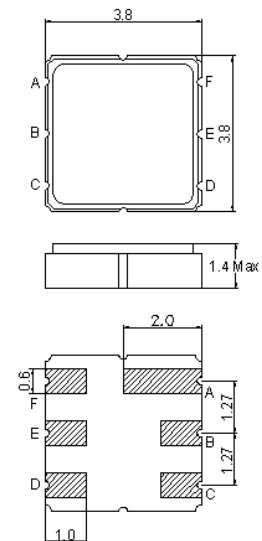
Specifications

Parameter	Unit	Min	Typical	Max
Center Frequency	MHz	-	465.0	-
Insertion Loss 452.5 ~ 457.5 MHz	dB	-	2.6	4.8
Ripple 452.5 ~ 457.5 MHz	dB	-	1.4	2.0
Stop Band Attenuation 0.300 ~ 443.0 MHz	dB	25	28	-
462.5 ~ 467.5 MHz	dB	30	47	-
467.5 ~ 1700.0 MHz	dB	25	28	-
1700.0 ~ 2000.0 MHz	dB	20	28	-
Terminating Impedance	Ω /pF	50/0		
Input Power 452.5 ~ 457.5	dBm	-	-	27

Frequency Response



Package Outline



B: In, E: Out, A, C, D, F : Ground

SAW PRODUCTS