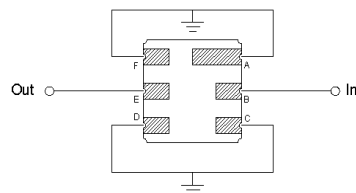
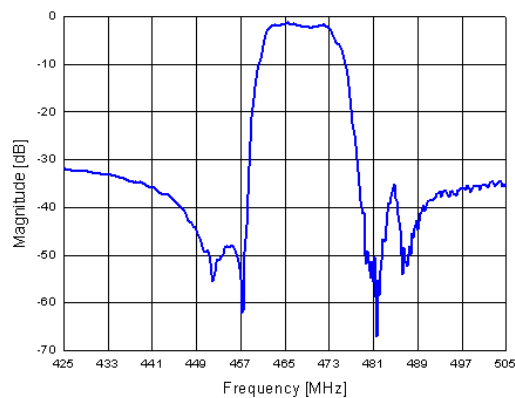


465.0 MHz RF SAW Filter for CDMA Rx 162961

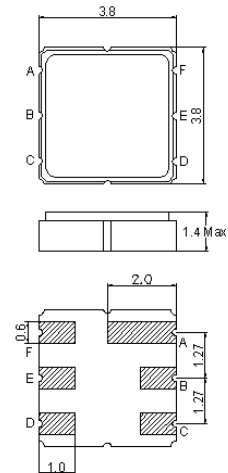
Specifications

Parameter	Unit	Min	Typical	Max
Center Frequency	MHz	-	465.0	-
Insertion Loss 462.5 ~ 467.5 MHz	dB	-	2.4	4.8
Ripple 462.5 ~ 467.5 MHz	dB	-	1.9	2.4
Stop Band Attenuation 0.300 ~ 452.5 MHz	dB	25	28	-
452.5 ~ 457.5 MHz	dB	35	45	-
485.0 ~ 507.5 MHz	dB	30	33	-
507.5 ~ 1200.0 MHz	dB	20	28	-
1200.0 ~ 1700.0 MHz	dB	30	37	-
1700.0 ~ 2000.0 MHz	dB	20	30	-
Terminating Impedance	Ω/pF	50/0		
Input Power 462.5 ~ 467.5	dBm	-	-	27

Frequency Response



Package Outline



B: In
E: Out
A, C, D, F: Ground