

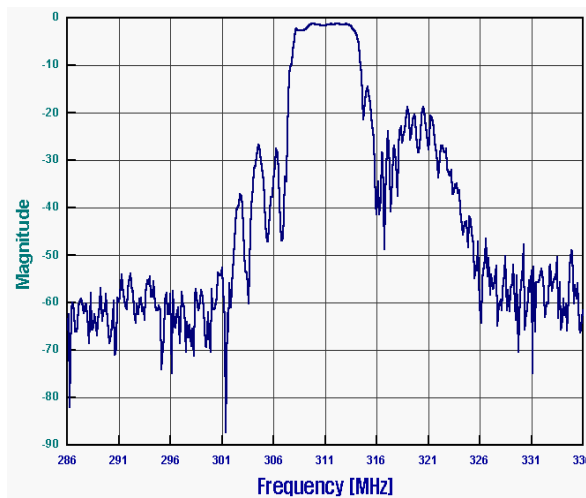
311.0 MHz RF SAW Filter

162987

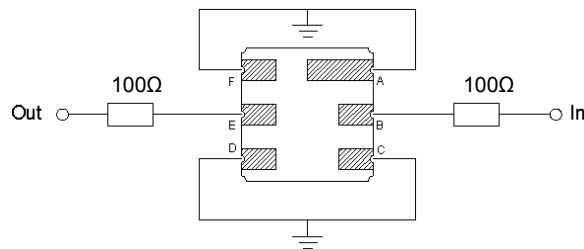
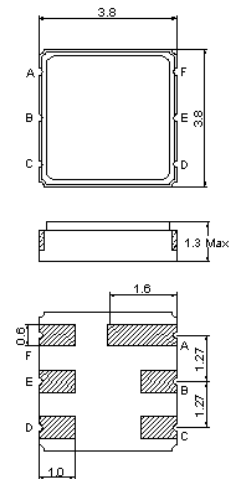
Specifications

Parameter	Unit	Min	Typical	Max
Center Frequency	MHz	-	311.0	-
Insertion Loss (a_{\min}) 309.35 ~ 312.65 MHz	dB	-	1.6	3.0
Passband Ripple 309.35 ~ 312.65 MHz	dB	-	0.6	2.0
Relative Attenuation DC ~ $f_0 - 42.8$ MHz $f_0 + 40.0$ ~ $f_0 + 200.0$ MHz	dB	50 50	55 55	- -
Terminating Impedance	-	150 Ω		

Frequency Response



Package Outline



B : In
E : Out
A, C, D, F : Ground

SAW PRODUCTS