

315 MHz RF SAW Filter

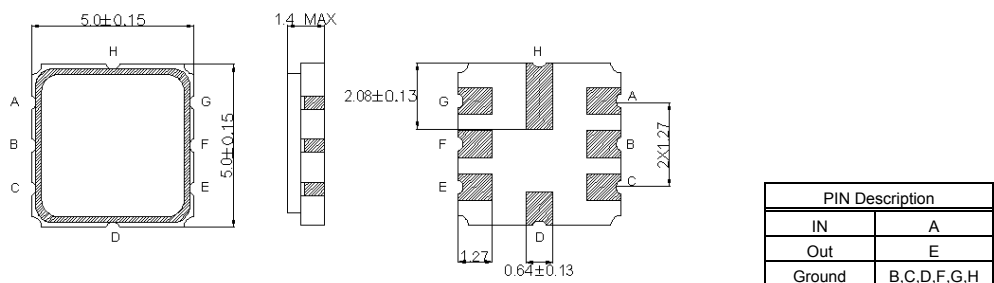
162988

Specifications (preliminary)

Parameters Description	Unit	Min	Typical	Max
Center Frequency (Fo)	MHz	-	315.0	-
Minimum Insertion Loss, 314.80 - 315.20 MHz	dB		3.0	5.0
Source Impedance (single ended) ⁽¹⁾	Ω		50	
Load Impedance (single ended) ⁽¹⁾	Ω	-	50	-
Operating Temperature Range	$^{\circ}\text{C}$	-40	-	+85
Passband (relative to min I.L.)				
314.75 - 315.24 MHz	dB		1.5	3.0
314.69 - 315.30 MHz	dB		2.0	6.0
Stop Band Attenuation:				
10 - 270.0 MHz	dB	45	50	-
270.0 - 309.0 MHz	dB	35	40	-
309.0 - 314.0 MHz	dB	15	20	-
316.0 - 335.0 MHz	dB	10	15	-
335.0 - 400.0 MHz	dB	35	40	-
400.0 - 1000.0 MHz	dB	45	50	-
Maximum Input Power	dBm	-	-	0
Package type & size		SM5050		
Length x Width	mm ²	-	5.0 x 5.0	-
Height	mm	-	-	1.4

Notes : (1) With Matching Network .

Package Outline

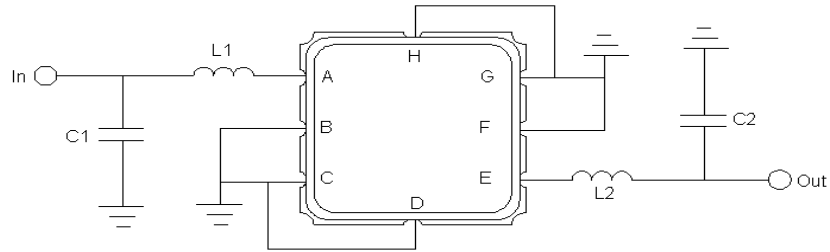


315 MHz RF SAW Filter

162988

SAW PRODUCTS

Test Environment



L1 : 82 nH

L2 : 82 nH

C1 : 5.6 pF

C2 : 5.6 pF

Source & Load Impedance 50Ω

Frequency Response

