

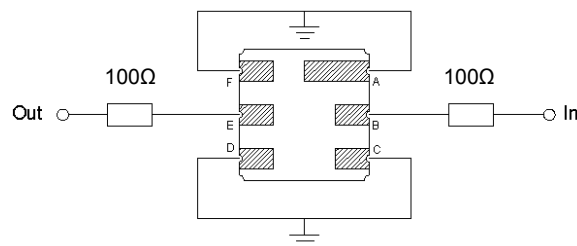
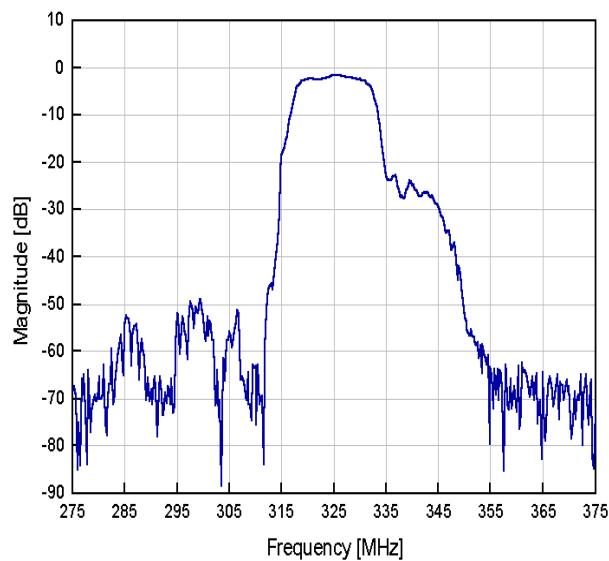
325 MHz RF SAW Filter

162989

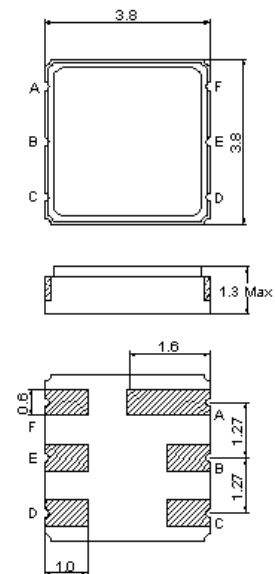
Specifications

Parameter	Unit	Min	Typical	Max
Center Frequency	MHz	-	325.3	-
Insertion Loss (a_{min}) 322.0 ~ 328.6 MHz	dB	-	2.5	3.5
Passband Ripple 322.0 ~ 328.6 MHz	dB	-	0.8	1.5
Relative Attenuation $f_o - 100.0 \sim f_o - 39.5$ MHz $f_o + 39.5 \sim f_o + 100.0$ MHz	dB	40 50	50 60	- -
Terminating Impedance	-	150 Ω		

Frequency Response



Package Outline



B : In
E : Out
A, C, D, F : Ground

SAW PRODUCTS