

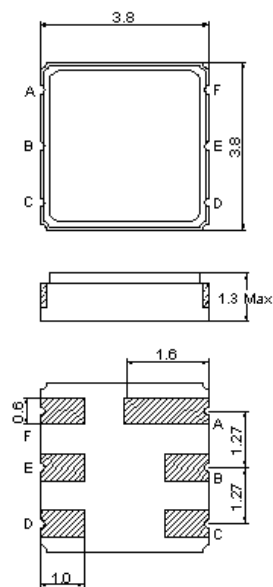
# 425.0 MHz RF SAW Filter

# 162993

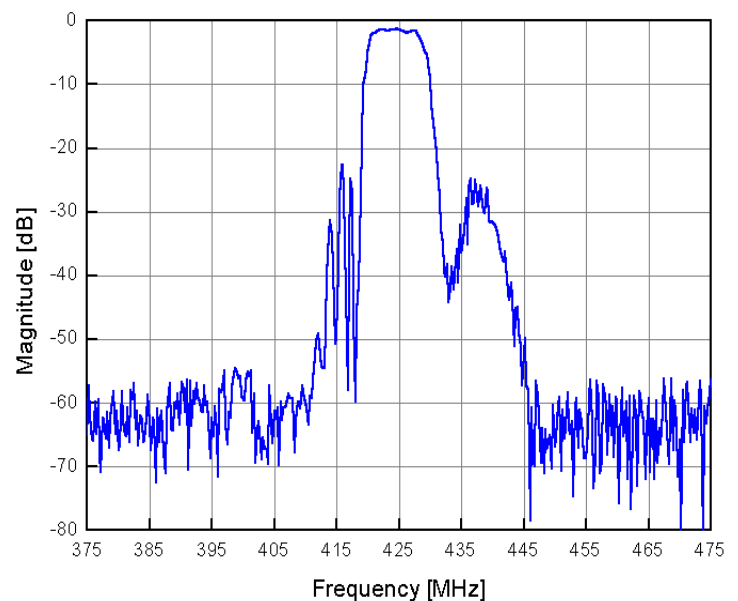
## Specifications

Parameter	Unit	Min	Typical	Max
Center Frequency ( $F_o$ )	MHz	-	425.0	-
Insertion Loss within 423 ~ 427 MHz	dB	-	1.8	3.5
Ripple 423 ~ 427 MHz	dB	-	0.5	1.5
Attenuation:				
$F_o - 200 \sim F_o - 42.8$ MHz	dB	50	55	-
$F_o + 40.0 \sim F_o + 200$ MHz	dB	50	55	-
Terminating Impedance	$\Omega/pF$	150/0		

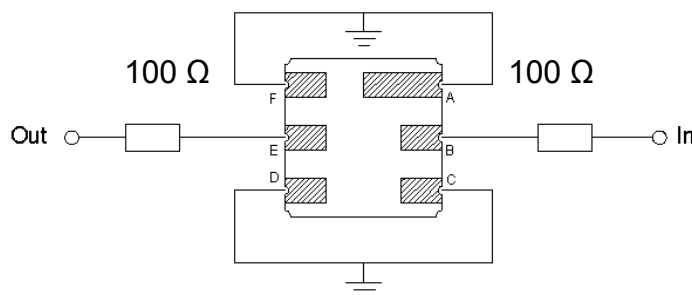
## Package Outline



## Frequency Response



## Testing Environment



PIN Descriptions	
IN	B
Out	E
Ground	A, C, D, F

SAW PRODUCTS

COM DEV