

433 MHz RF SAW Filter

162994

Specifications

Parameter	Unit	Min.	Typical	Max.
Centre Frequency (F ₀)	MHz	-	433.92	-
Insertion Loss Within 433.8 ~ 434.12	dB	-	2.2	4.0
Relative Passband:				
434.76 ~ 434.08 MHz	dB	0	0	2.0
433.74 ~ 434.10 MHz	dB	0	0	3.0
433.68 ~ 434.16 MHz	dB	0	0	6.0
Relative Pass Bandwidth (BW ₃)	KHz	670	720	-
Source Impedance (single ended) ⁽¹⁾	Ω	-	50	-
Load Impedance (single ended) ⁽¹⁾	Ω	-	50	-
Operating Temperature Range	°C	-45	-	+120
Relative Attenuation:				
10.0 ~ 414.0 MHz	dB	45	48	-
414.0 ~ 428.0 MHz	dB	40	43	-
428.0 ~ 432.92 MHz	dB	15	19	-
434.92 ~ 442.0 MHz	dB	10	14	-
442.0 ~ 550.0 MHz	dB	35	38	-
550.0 ~ 1000.0 MHz	dB	45	50	-
Turnover To	°C	-	25	-
Maximum DC Voltage	V	-	-	0
Maximum Input Power	dBm	-	-	10
Package Type and Size		K		
Length X Width	mm ²	-	5.0 x 5.0	-
Height	mm	-	-	1.7

Notes: (1) No Matching Network.

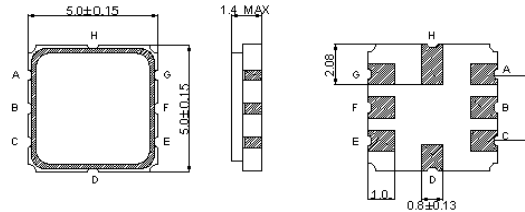
SAW PRODUCTS

COM DEV

433 MHz RF SAW Filter

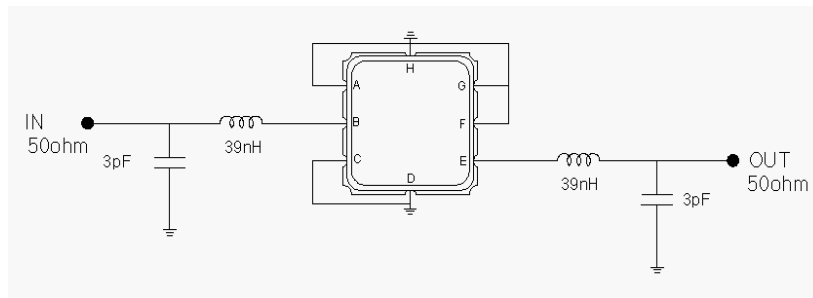
162994

Package Outline

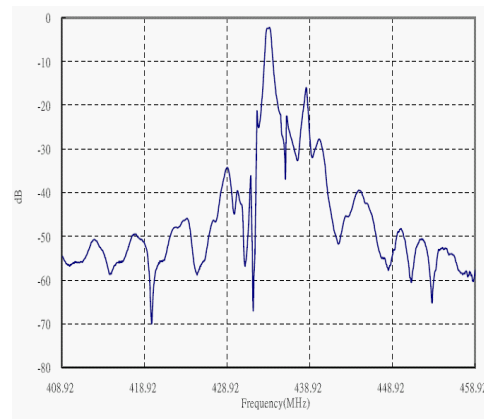
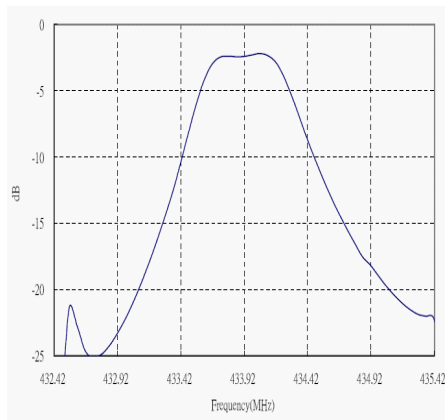


PIN Descriptions: IN – B, OUT – E, GROUND – A, C, D, F, G, H

Testing Environment



Frequency Response



SAW PRODUCTS

COM DEV