

# 434.0 MHz Wireless, RF SAW Filter

# 162995

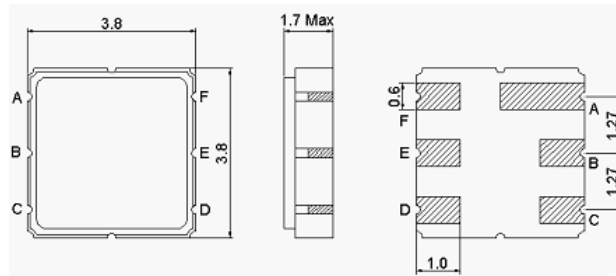
## Specifications

Parameter	Unit	Min	Typical	Max
Center Frequency ( $f_0$ )	MHz	-	434.0	-
Insertion Loss within 432 ~ 436 MHz	dB	-	1.5	1.5
Source Impedance (single ended) <sup>(1)</sup>	$\Omega$	-	150	-
Load Impedance (single ended) <sup>(1)</sup>	$\Omega$	-	150	-
Operating Temperature Range	$^{\circ}\text{C}$	-30	-	+65
Amplitude Ripple within 432 ~ 436 MHz	dB <sub>p-p</sub>	-	0.8	2.0
Attenuation:				
$f_0 - 200 \sim f_0 - 42.8$ MHz	dB	50	55	-
$f_0 + 40 \sim f_0 + 200$ MHz	dB	50	55	-
Maximum DC Voltage	V	-	-	10
Maximum Input Power	dBm	-	-	0
Package type & size			P	
Length X Width	mm <sup>2</sup>	-	3.8 X 3.8	-
Height	mm	-	-	1.7

Notes: (1) With Matching Network (Ref. Testing Environment Circuit as shown below).

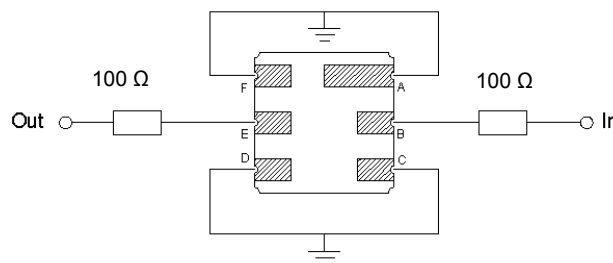
Those impedances could be modified with different impedance values and/or structures, if necessary.

## Package Outline



PIN Descriptions	
IN	B
Out	E
Ground	A, C, D, F

## Testing Environment



Source & Load Impedance: 150  $\Omega$

## Frequency Response

