

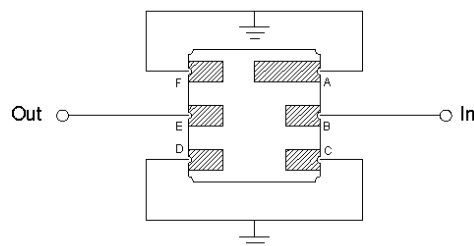
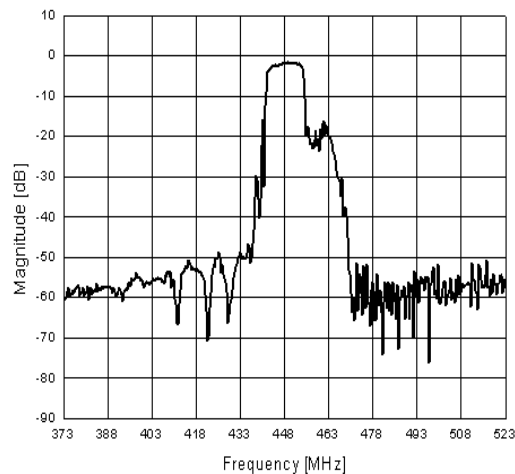
448.0 MHz RF SAW Filter

162999

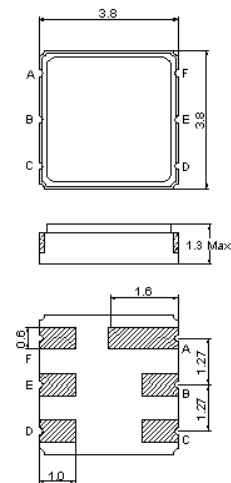
Specifications

Parameter	Unit	Min	Typical	Max
Center Frequency	MHz	-	448.0	-
Insertion Loss 446.0 ~ 450.0 MHz	dB	-	2.5	3.5
Ripple 446.0 ~ 450.0 MHz	dB	-	0.6	1.5
Stop Band Attenuation $f_0 - 200.0 \sim f_0 - 42.8$ MHz	dB	50	55	-
$f_0 + 42.8 \sim f_0 + 200.0$ MHz	dB	50	55	-
Terminating Impedance	Ω/pF	50/0		

Frequency Response



Package Outline



B : In
E : Out
A, C, D, F : Ground

SAW PRODUCTS