

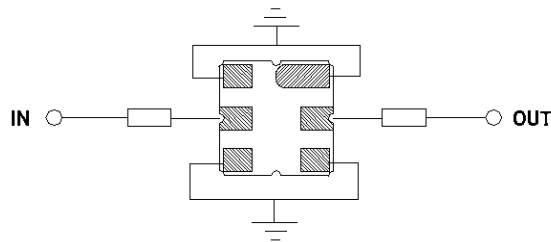
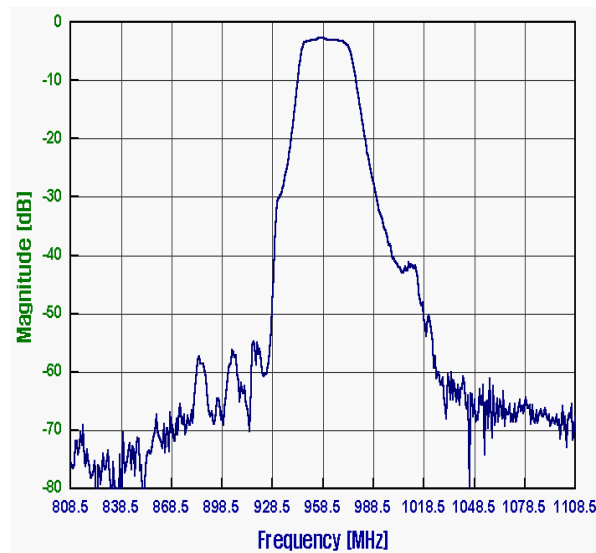
959 MHz RF SAW Filter

163016

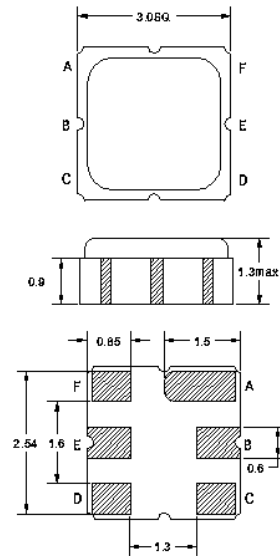
Specifications

Parameter	Unit	Min	Typical	Max
Center Frequency (f_0)	MHz	-	958.5	-
Insertion Loss 953.5 ~ 963.5 MHz	dB	-	2.8	3.5
Ripple 953.5 ~ 963.5 MHz	dB	-	0.5	1.0
Return Loss 953.5 ~ 963.5 MHz	dB	10	13	-
Stop Band Attenuation dc~ f_0 -45.0 MHz	dB	45	55	-
f_0 +70.0 ~ f_0 +500.0 MHz	dB	50	60	-
Terminating Impedance In/Out	Ω /pF	50/0		

Frequency Response



Package Outline



B : In
E : Out
A, C, D, F : Ground

SAW PRODUCTS