

Corporate Capabilities



High-Quality
Interconnects
& Value-Added Services



Companies Seek Strategic Alliances for Mutual Growth

AirBorn's core business is engineering and manufacturing specialized connectors and electronic components for Original Equipment Manufacturers worldwide. We supply leading companies across industries — such as aerospace and defense, commercial aviation, medical, industrial, and space exploration — with both components and services. Our comprehensive Model-to-Market® service guides your product from its earliest concept to full-scale production.

From front-office personnel to factory-floor teams, AirBorn's culture embraces both Six Sigma and LEAN Manufacturing Principles. Our products are trusted to perform under extreme conditions where complete reliability is vital. Customers have relied on AirBorn products since our inception in 1958.



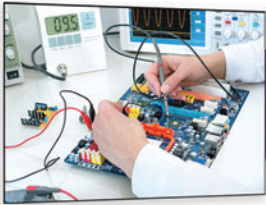
Concept
Development



Detailed Design
& Engineering



Quick-Turn
Prototyping



Test, Qualification
& Quality



Manufacturing
Low to High Volumes



Global Packaging
& Distribution

Model-to-Market[®]

AirBorn's engineering group specializes in designing and developing new products for OEMs worldwide. Our team of more than 50 degree-holding engineers is highly innovative and committed to addressing our customers' challenges — and that's just the beginning.

Leverage our design and manufacturing expertise throughout the entire product development process. From conceptual design and prototyping to pilot runs and mass production, our teams work efficiently to accelerate your time-to-market.

Our global sales presence, combined with strategic distribution partners, ensures a responsive procurement process — no matter where you do business.



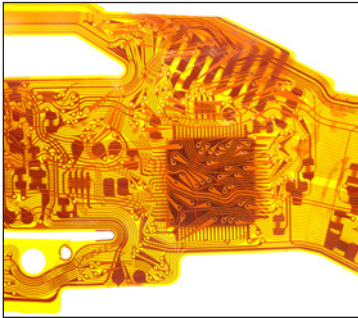
Corporate Locations & Capabilities

	Addison, TX	Georgetown, TX	Lake City, PA	Little Falls, MN
Product Specialties	<ul style="list-style-type: none"> AirStrip connectors R-Series connectors TriMate connectors W-Series connectors 	<ul style="list-style-type: none"> AirStrip connectors Cable assemblies & harnesses FOCuS/AOC copper cables Fuze assemblies High-speed, SI solutions M-Series connectors N-Series connectors R-Series connectors Series 360 connectors 	<ul style="list-style-type: none"> Cable assemblies & harnesses M-Series connectors Power Blade Power supplies R-Series connectors 	<ul style="list-style-type: none"> Automation/clean-room assembly Connector stampings & cmpnt. FOCuS/AOC fiber optic cables and connectors RC Series connectors Slnergy connectors verSI connectors Z-Series connectors
Manufacturing Specialties	<ul style="list-style-type: none"> CNC machining Electronic connector manufacturing Screw machine shop 	<ul style="list-style-type: none"> Electronic connector manufacturing Harness assemblies for electronic use manufacturing 	<ul style="list-style-type: none"> Electronic connector manufacturing Harness assemblies for electronic use manufacturing Printed circuit assembly (electronic assembly) manufacturing 	<ul style="list-style-type: none"> Automation design & manu. Electronic connector manu. Machinery manufacturing Metal crown, closure, & other metal stamping Mold tool design & manufacture Special tool & die, die set, jig, fixture design & manufacturing Stamp tool design & manufacture
Manufacturing Capabilities	<ul style="list-style-type: none"> Automated epoxy & contact lubricant dispensing Automatic contact clipping CNC machining & tool/die – Engineering drawings downloaded directly Contact assembly, loaders, insertion Heat staking Laser marking Optical/video inspection of tools & finished components Resistance welding Robotic contact assembly & gauging Robotic contact bending Robotic solder dipping Screw machine shop SMT lead forming Ultrasonic welding 	<ul style="list-style-type: none"> 3D printing Crimping Epoxy mixing & dispensing Hot bar/hand soldering to IPC 620 Laser wire & cable stripping Mechanical wire & cable cutting Mechanical wire & cable stripping Plasma etching Resistance welding Robotic potting Robotic solder dipping SMT lead forming UV epoxy curing Vapor degreasing VC2 clean environment Video jet & laser marking Wire braiding 	<ul style="list-style-type: none"> Aqueous cleaning Batch ovens for drying & curing Clean environment for microelectronic assembly Flow ovens for soldering surface mount components Harness board wiring Hot bar/hand soldering to IPC 620 Induction soldering Injection molding Ink jet printing Machining Pick-and-place equipment for placing surface mount devices on PCBs Plasma etching Selective soldering Solder pot wire tinning (leaded & RoHS) Spray booth Vacuum de-gas Wire & cable cut and strip Wave soldering 	<ul style="list-style-type: none"> 3D printing Automated connector assembly Automated contact assembly Epoxy mixing & dispensing High-speed stamping Hot bar/hand soldering to IPC 620 Insert molding Laser wire & cable stripping Metal finishing reel-to-reel plating – Tin, tin lead, gold, selective, associated process controls Plastic injection molding Resistance welding Video jet & laser marking
Qualification & Control Capabilities	<ul style="list-style-type: none"> Optical/video inspection – 13" monitors – Microscopes – Optical comparators Test automation Nadcap certified hardware passivation QE2 	<ul style="list-style-type: none"> Environmental, electrical, mechanical test lab – Continuity, DWV, resistance testing, thermal humidity chamber, product development testing, qualification testing, root failure analysis, salt spray, signal integrity testing, shock table, thermal shock chamber, TVAC, validation & verification testing, vacuum chamber, x-ray/CT scan, L1 & L2 techs IPC - space addendum certified trainer 	<ul style="list-style-type: none"> Automated tensile testing Crimp height monitoring Electrical testing – Continuity, DWV & resistance Environmental testing Ionic contamination testing 	<ul style="list-style-type: none"> Atomic absorption (AA) measures concentration of metals In solution Class 1,000 clean room Differential scanning calometer (DSC), measures melt temperature for solder & plastics Cirris electrical testing – Continuity, DWV, resistance Probe inspection technology (Ziess) Vision inspection (OGP) XRF equipment for measurement of coating thickness

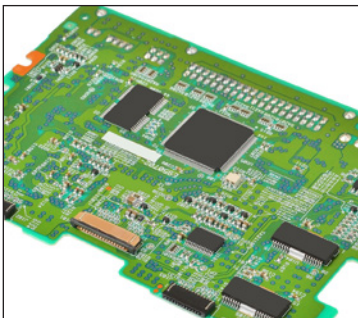
Taunton, MA	Toronto, Canada	Edenbridge, UK	Other
<ul style="list-style-type: none"> • Cable assemblies & harnesses • Fiber-optic cables & assemblies <ul style="list-style-type: none"> – Glass & plastic – ST, SC, LC & SLA terminations • High-level assemblies (HLAs) <ul style="list-style-type: none"> – Electromechanical assemblies – Frame builds – Power distribution panels • Printed circuit board assemblies 	<ul style="list-style-type: none"> • Design & DFM assistance • Flex & rigid-flex assembly 	<ul style="list-style-type: none"> • Cable assemblies & harnesses • Electronics enclosure assemblies • Flexible circuit design & assembly • M-Series connectors • N-Series connectors • PCB assembly (pick & place) • PCB connectors 	
<ul style="list-style-type: none"> • Custom battery assembly manufacturing • Custom harness assemblies <ul style="list-style-type: none"> – Wire, cable, fiber optic, coax & polytubing • Electromechanical assembly • Fiber-optic cable manufacturing • NPI, test and R&D builds • Printed circuit board assembly manufacturing 	<ul style="list-style-type: none"> • Extended length flex up to 100 ft. • Flex: 10 layers • Full, in-house assembly • High-density edge connection flex • Rigid flex: 15 layers • Sculptured flex • Supply chain management solutions 	<ul style="list-style-type: none"> • Electronic connector manufacturing • Harness assemblies for electronic use manufacturing 	<ul style="list-style-type: none"> • Bare printed circuit board manufacturing
<ul style="list-style-type: none"> • Automated pull testing to 1,000 lbs. • Automated wire cutting/stripping <ul style="list-style-type: none"> – Multi-conductor, coax, ribbon, fiber optic • Automated wire twisting • Battery pack assembly • Braiding, nylon & tin copper • Custom assembly potting • Custom connector potting • Custom flex bar assemblies • Epoxy mixing & dispensing • Fiber optics assembly, glass & plastic • Harness assemblies • Injection molding • In-line laser & holstamp wire marking • Large-gauge wire term. up to 500 MCM • Laser stripping • Logic device programming • PCB assembly <ul style="list-style-type: none"> – SMT, thru-hole, hybrid – 0201 - 12 mil pitch devices including BGA/LGA • Ribbon cable assembly • Ultrasonic cleaning 	<ul style="list-style-type: none"> • 2x2 trace and space on 005 oz. copper • Flex assembly specifications <ul style="list-style-type: none"> – 1/2 oz. minimum copper clad thickness, 10:1 maximum hole aspect ratio, 92 mil maximum board thickness, 4x4 mil trace width & spacing, high-speed & high-temperature constructions • Flex Assembly Capability <ul style="list-style-type: none"> – BGA, crimping, conformal coating, eccobond, hand soldering, RoHS capable, SMT (machine soldering), wave soldering • Materials <ul style="list-style-type: none"> – LCP – Polyimide: AP, FR, LF, TK • Surface finishes <ul style="list-style-type: none"> – Bright tin, ENIG, hard gold, HASL, immersion silver, tin-lead, OSP • Signal shielding <ul style="list-style-type: none"> – Cross-hatch copper, silver ink epoxy, solid copper 	<ul style="list-style-type: none"> • Cable assemblies including Contra helically laid cables • Crimping • Drying/curing ovens • Epoxy dispensing • Function generator & oscilloscope • Hand soldering to IPC 620 • Harness board wiring • Manual & Auto solder dipping • Laser wire & cable stripping • Mechanical wire & cable cutting & stripping (multi-conductor & coax) • Plasma etching • Prototype potting mold tooling • Solvent degreasing • Video jet part Marking • Laser part marking • Vacuum ovens 	<ul style="list-style-type: none"> • 1/4 oz. minimum copper clad thickness • 24" x 30" panel sizes • 240mm maximum board thickness • 34 layers • 3x3mm line width & spacing • Assembly capability <ul style="list-style-type: none"> – 0.25 mm pitch potting, SMT, thru-hole • Backplane manufacturing • CNC machining <ul style="list-style-type: none"> – 3-4 axis – 5 axis • Laser drilling & laser skiving • Machining capabilities - mold fabrication, secondary machining, wire EDM • Micro-via capability injection molding <ul style="list-style-type: none"> – Insert molding capabilities, engineering plastics: PPS, DAP, nylon, LCP 25 mm pitch potting, SMT, thru-hole
<ul style="list-style-type: none"> • Automated pull test • Automated optical inspection • Certified IPC trainer on site • Cirris electrical testing <ul style="list-style-type: none"> – Continuity, hi-pot, resistance, linear components • Electrical testing <ul style="list-style-type: none"> – ICT, FCT • Ionic contamination testing • IPC 610, IPC 620, IPC 7711/7722, IPC 620 space addendum, IPC J-STD-001, IPC J-STD-001 space addendum • Thermal testing • Xray 	<ul style="list-style-type: none"> • AS9100 Rev. D • CGP certified • Environmental testing • Full FAI capability • IPC 6013/IPC 600/IPC 610 Class 3 • IPC J-STD-001 • ISO9001:2015 • MIL-PRF-50884/31032 • Panel & assembly electrical testing • UL 94V0/V1 on many constructions 	<ul style="list-style-type: none"> • EN9100 Rev D/ISO9001 • Rolls-Royce SABRe • Tensile strength testing capability • Automated Testing Equipment (ATE) Cirris / Banair / HVX • Electrical testing – continuity, DWV & resistance • IPC Trainers; 610 / 600 / 620 / 7711 • IPC J-STD-001 • Full AS9102 FAIR (Qpulse) capability • ESD Protected Area 	<ul style="list-style-type: none"> • Environmental testing • Leakage test chamber • Panel & assembly electrical testing



Wire & Cable Assemblies



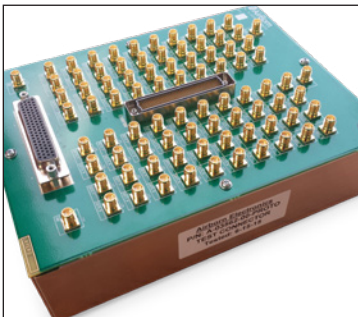
Flexible Circuit Assemblies



PCB Assemblies



Power Supplies



Box Builds

Value-Added Services

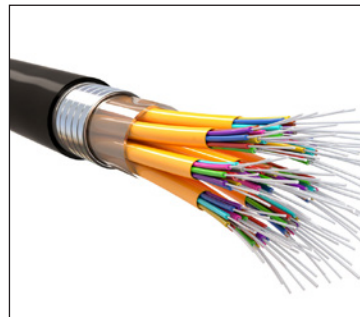
While connectors are at our core, AirBorn is much more than a "connector company". We proudly manufacture **Cable** (including Active Optical & Fiber Optics), **Flexible Circuit**, and **Printed Circuit Board Assemblies**.

We also fabricate complete **Chassis/Box Builds**, **Power Supplies**, **Wiring Harnesses** and offer **Engineering**, **Qualification**, & **Lab Services**. Our teams are highly trained and well equipped to deliver the finest quality product every time.

With our integrated, customer-focused services under one roof, we eliminate supplier markups — reducing lead times and saving time and money.



Lab
Services



Fiber-Optic Cabling

Partner with AirBorn

**Because You Need
Out-Of-This-World Dependability**



**Because Superior Design &
Durability Ensures We Stay Safe**



**Because Dependability Is
Vital To The Mission's Success**

The AirBorn Advantage

Model-To-Market
Solutions



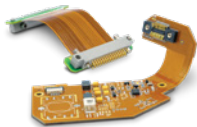
Custom
Power
Systems



VPX
Power Supply



Flexible
Circuit
Assemblies



Cable
Assemblies



FUZE
Assemblies



Active
Optical
Assemblies



Rectangular
W Series



Rectangular
R Series



Micro D
M Series



Nano D
N Series



High-Speed
Rectangular
verSI



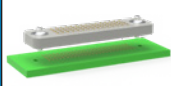
Modular Hybrid
Slnergy



Macro D
RockEt



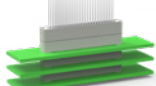
Z Axis Interposer
Z Series



High-Speed
Micro D
microSI



Stackable
RC Series



Circulars
Series 360



Strip Connector
AirStrip



PowerAmp
13A or 23A



Rugged Circulars
TriMate



CAPB-2.25

AirBorn
a **molex** company

p. 512.863.5585
www.airborn.com

